



Red Snapper



Gulf of Mexico Fishery Management Council

Red Snapper Biology



Spawning Behavior: Aggregate spawners

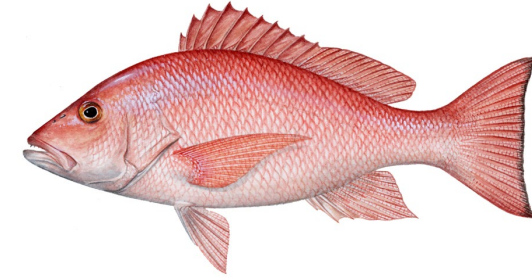
May-September; Peak: June-August

Age/Size at maturity: 2 years; 12-16 in TL

Max Age: 57 years; Max size: 40 in TL

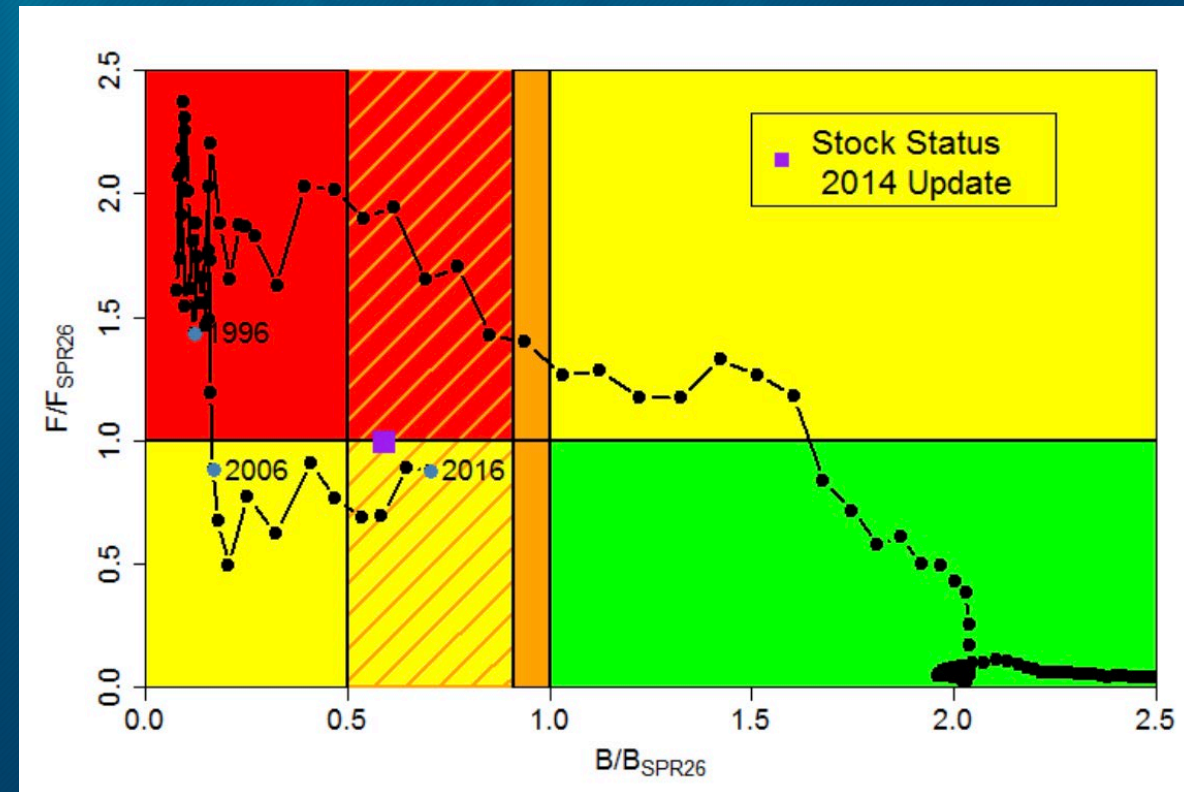
Species-specific biology: There may be regional differences in snapper stock (eastern vs western portion of the stock)

Stock Status



Red Snapper

Species	SEDAR	Terminal Year	SPR%	Overfished	Overfishing
Red Snapper	<u>SEDAR 7</u>	2003	26%	Yes	Yes
	<u>SEDAR 7 Update</u>	2008	26%	Yes	Yes
	<u>SEDAR 31</u>	2011	26%	Yes	No
	<u>SEDAR 31 Update</u>	2013	26%	Yes	No
	<u>SEDAR 52</u>	2016	26%	No/Rebuilding	No
	<u>SEDAR 74</u>	Rejected	26%		
	<u>SEDAR 98</u>				

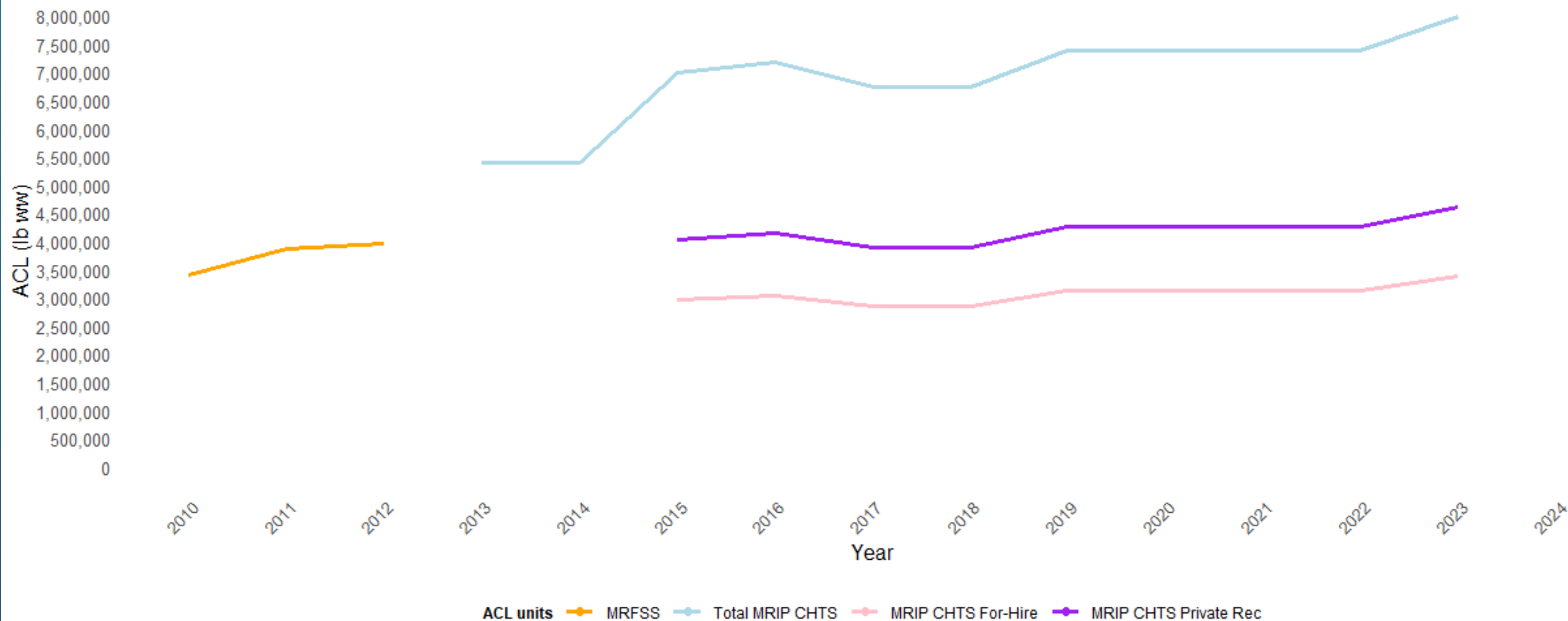


SEDAR 52, 2018

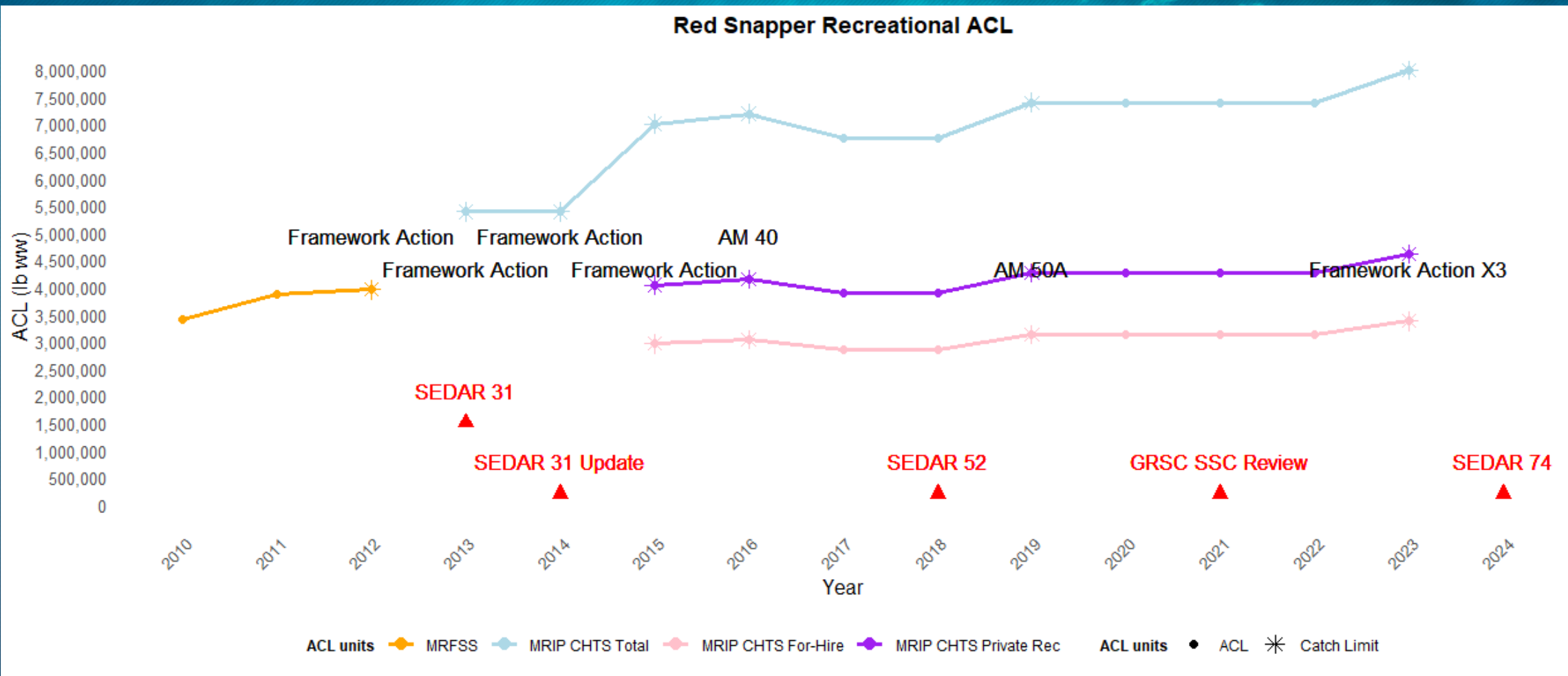
Catch Limits and Data Units



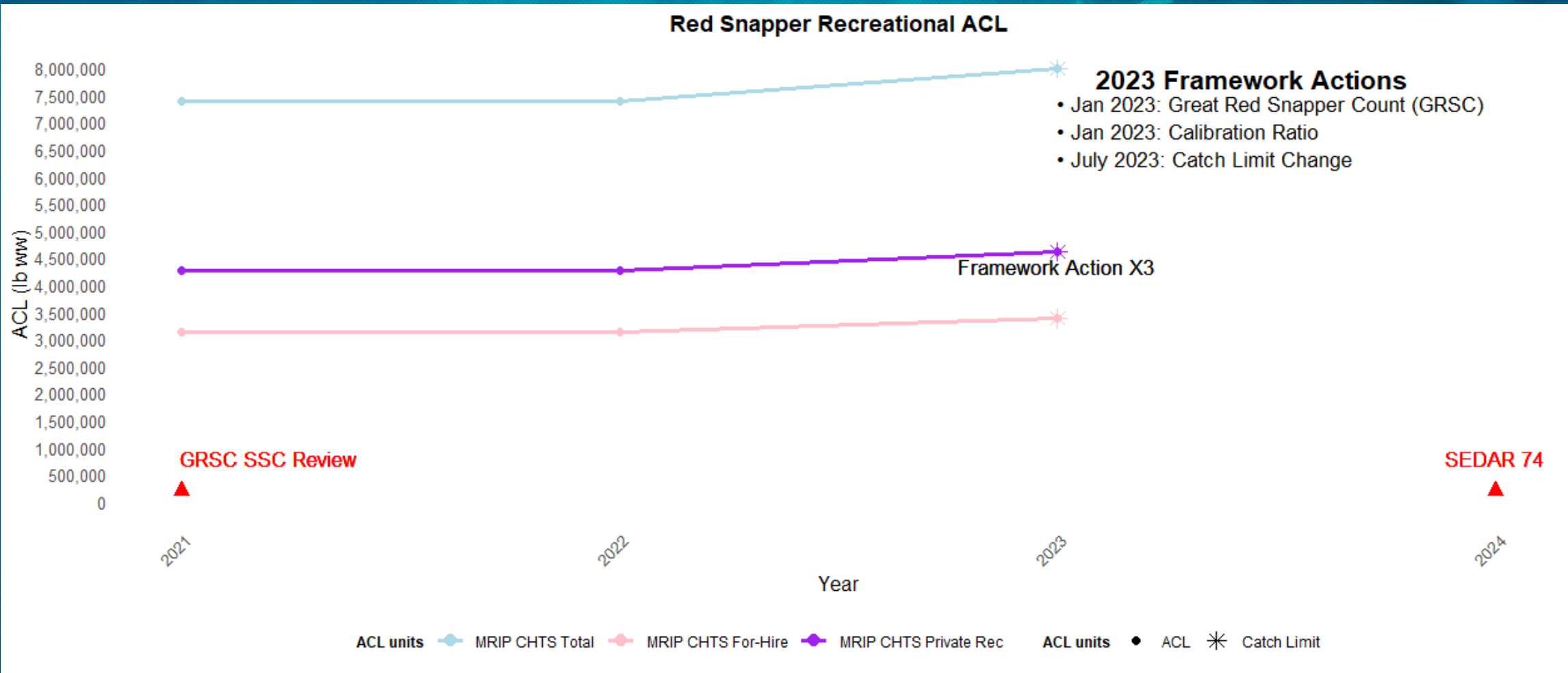
Red Snapper Recreational ACL



Stock Assessments and Catch Limit Changes



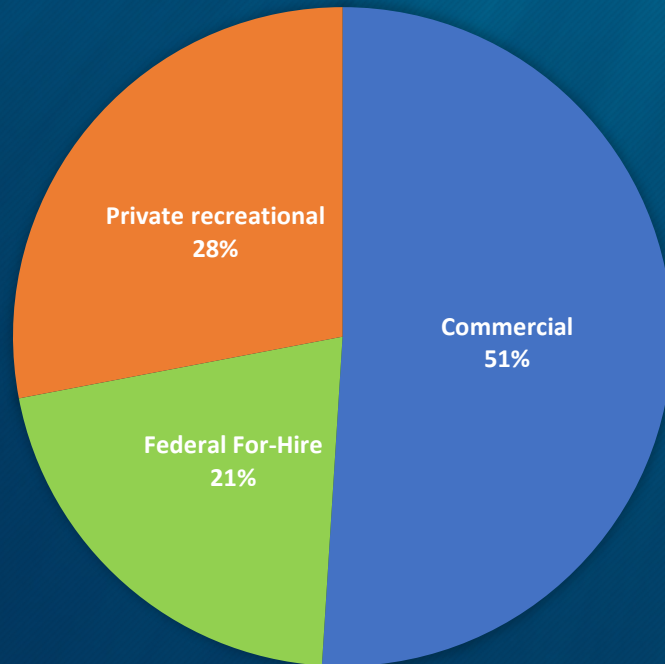
Stock Assessments and Catch Limit Changes (2021 - Present)



Regulations



ALLOCATION



Federal For-Hire

Season : Opens June 1

Bag limit: 2-fish

Size Limit: 16-inches

Private

Season: State specific

Bag limit:

- AL = 2-fish
- FL = 2-fish in 10 snapper aggregate
- LA = 4-fish
- MS = 2-fish
- TX = 4-fish

Size Limit:

- AL = 14-18 in TL
- FL = 16 in
- LA = 16 in
- MS = 16 in
- TX = 15 in

Accountability Measures



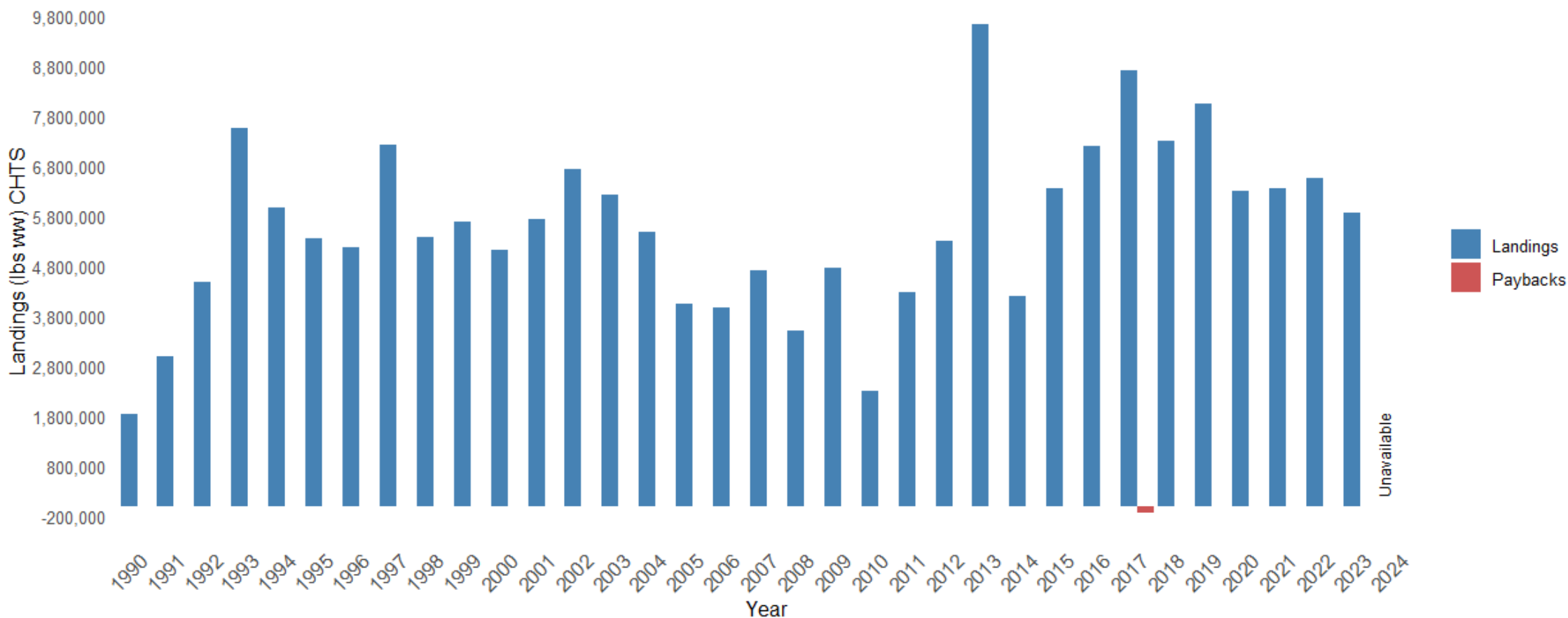
In season: Close the season for remainder of the year when harvest is projected reach the component ACL.

Post Season: When harvest exceeds the ACT it triggers a reduction in the recreational ACL and ACT for that following year by the amount of the ACL overage in the prior fishing year, unless the best scientific information available determines that a greater, lesser, or no overage adjustment is necessary. Payback overage amounts are component specific and for the private component payback overages are state-specific dependent on the amount of state-specific ACL exceeded in the previous year.

Landings/Overages



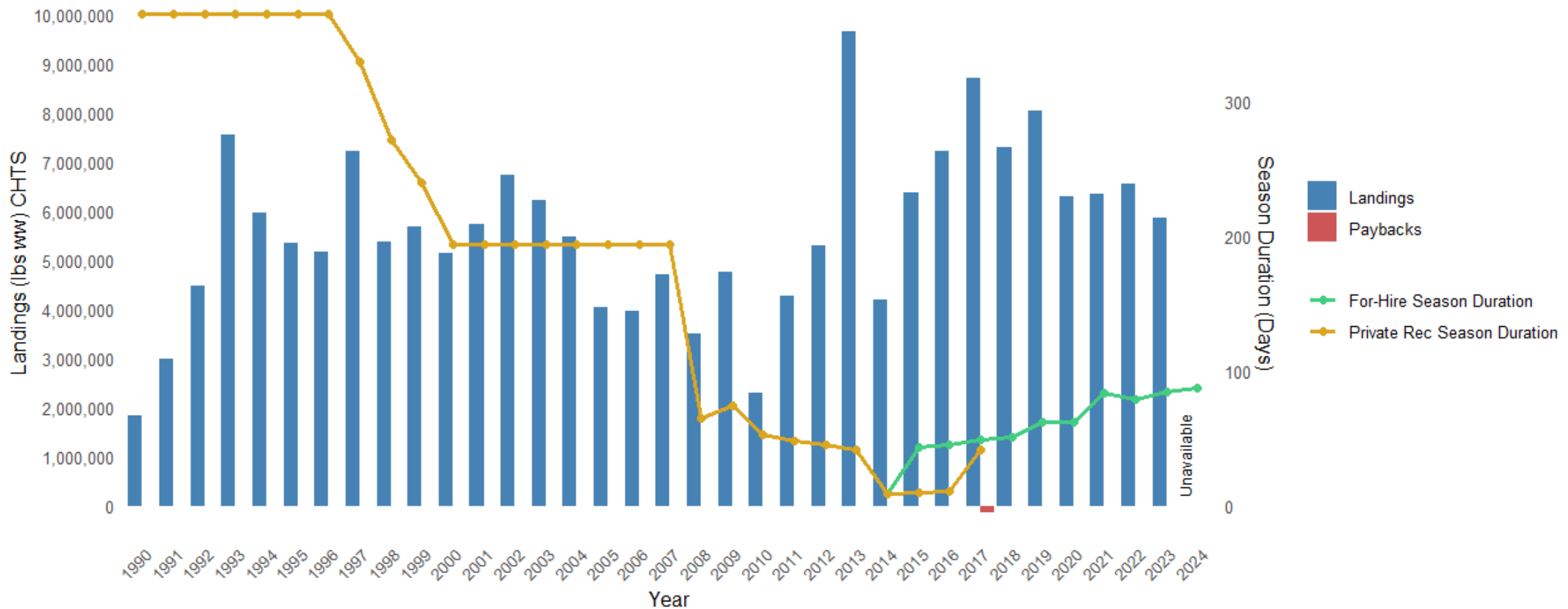
Red Snapper History of Management



Season Duration



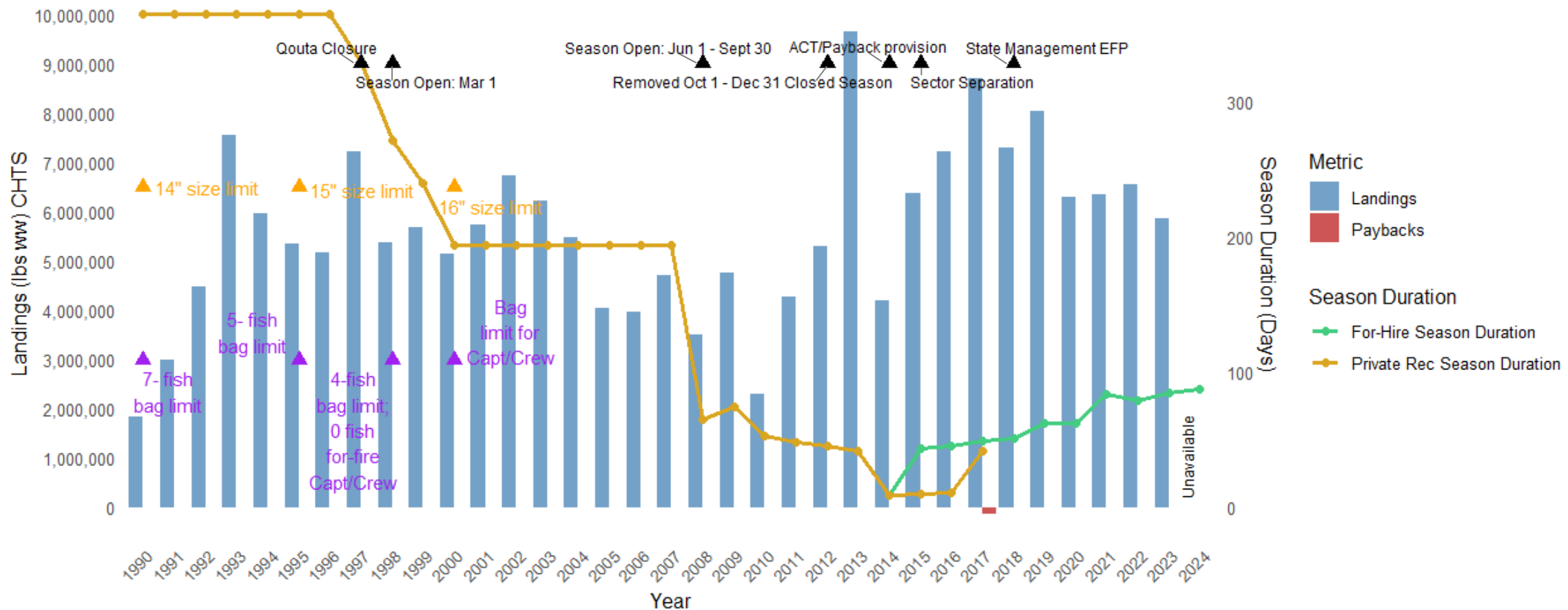
Red Snapper History of Management



Management Measures



Red Snapper History of Management



State Specific Private Season Lengths (2018 -2023)



Year	Florida	Alabama	Mississippi	Louisiana	Texas
2018	40	28	75	60	81
2019	40	36	78	109	61
2020	55	44	46	41	62
2021	55	124	119	146	64
2022	57	126	192	62	94
2023	87	72	73	220	93

Questions?

